

# Student Satisfaction Survey (SSS) 2023-24

## Government Degree College Bijbehara.

### Teaching – Learning and Evaluation

Following are questions for online student satisfaction survey regarding teaching learning process.

1. How much of the syllabus was covered in the class?

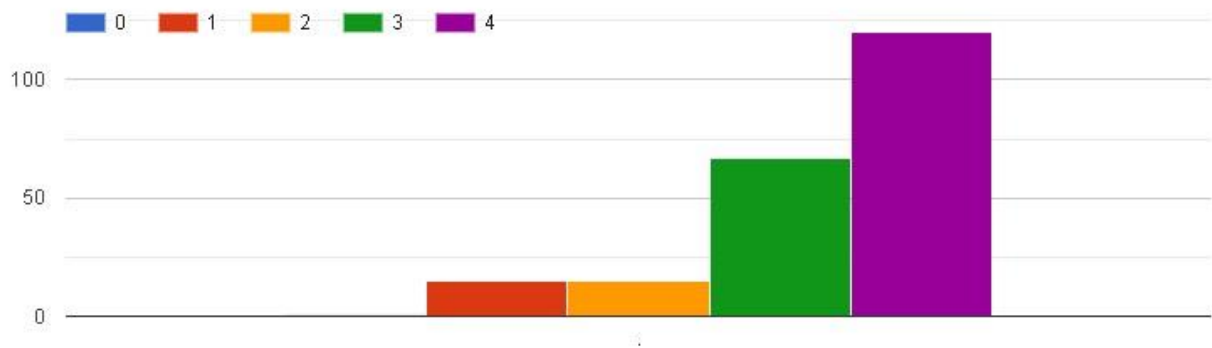
4 – 85 to 100%

3 – 70 to 84%

2 – 55 to 69%

1 – 30 to 54%

0 – Below 30%



2. How well did the teachers prepare for the classes?

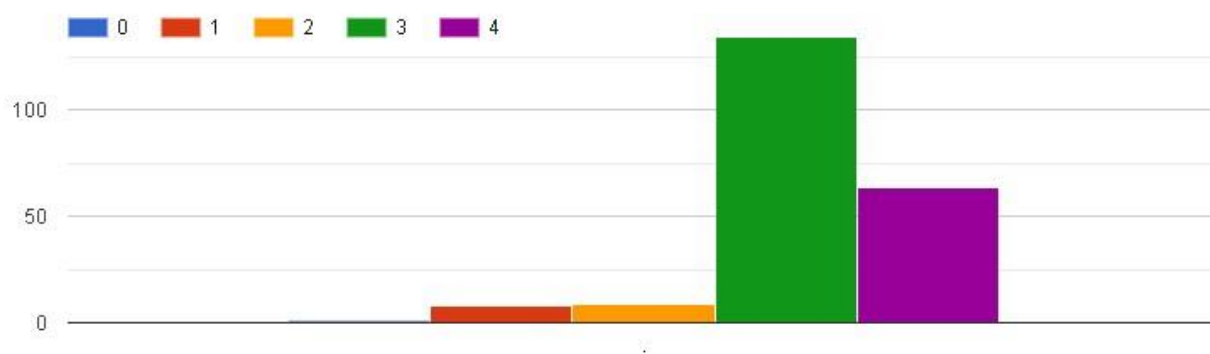
4 - Thoroughly

3 - Satisfactorily

2 - Poorly

1 - Indifferently

0 - Won't teach at all



3. How well were the teachers able to communicate?

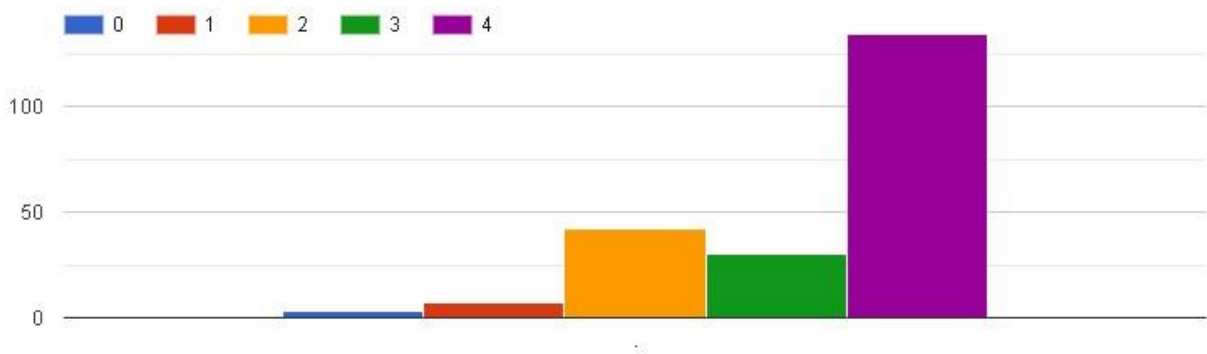
4 – Always effective

3 – Sometimes effective

2 – Just satisfactorily

1– Generally ineffective

0– Very poor communication



4. The teacher's approach to teaching can best be described as

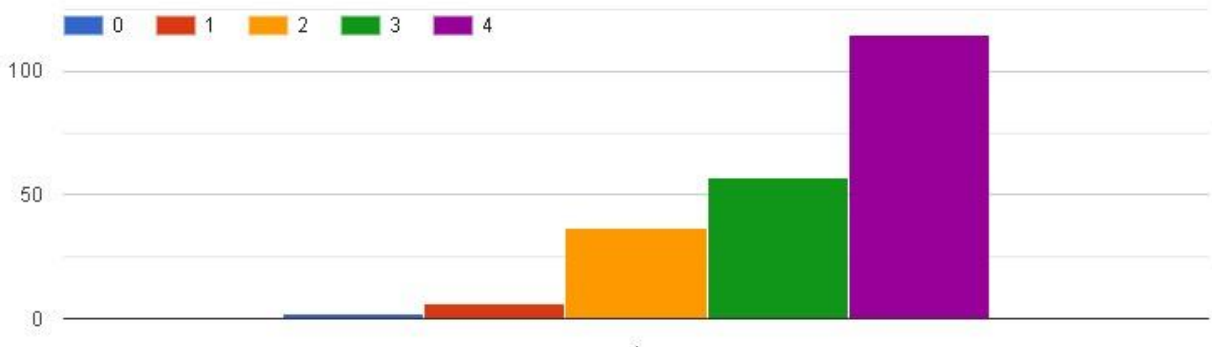
4- Excellent

3 - Very good

2 - Good

1 - Fair

0- Poor



5. The teacher's approach to teaching can best be described as

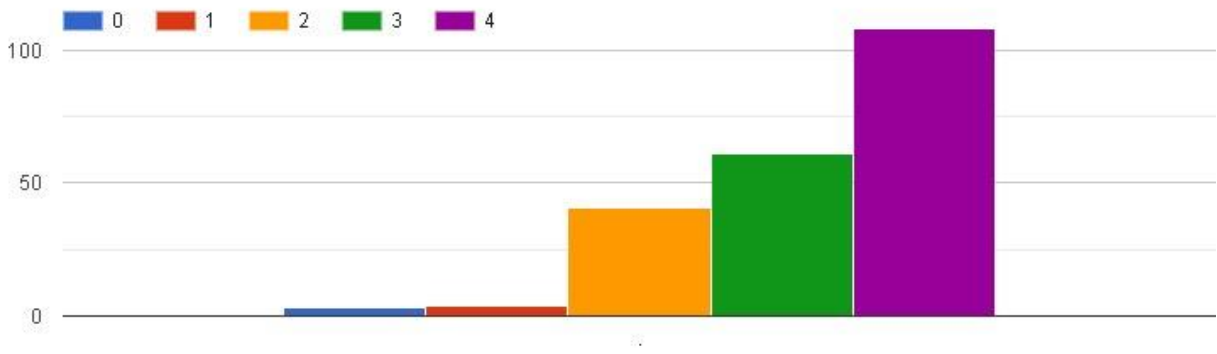
4- Excellent

3 - Very good

2 - Good

1 - Fair

0- Poor



6. Fairness of the internal evaluation process by the teachers.

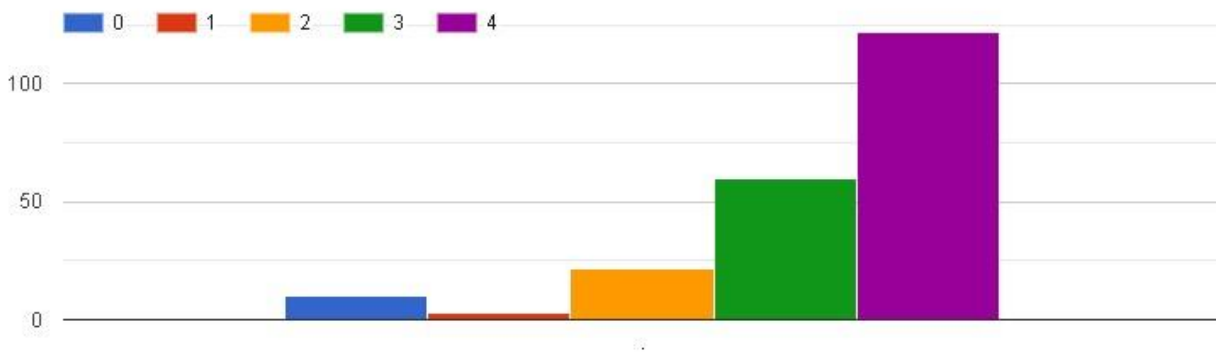
4 - Always fair

3 - Usually fair

2 - Sometimes unfair

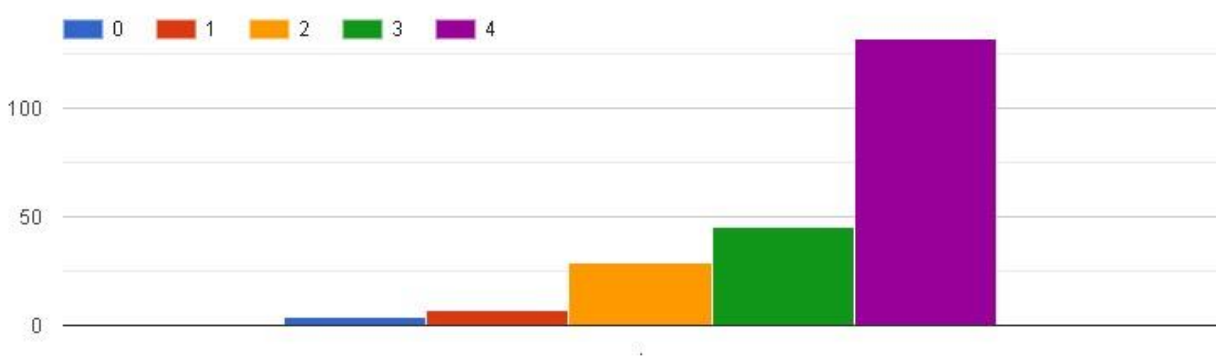
1 - Usually unfair

0 - Unfair



7. Was your performance in assignments discussed with you?

- 4 - Every time
- 3 - Usually
- 2 - Occasionally/Sometimes
- 1 - Rarely
- 0 - Never



8. The institute takes active interest in promoting internship, student exchange, field visit opportunities for students.

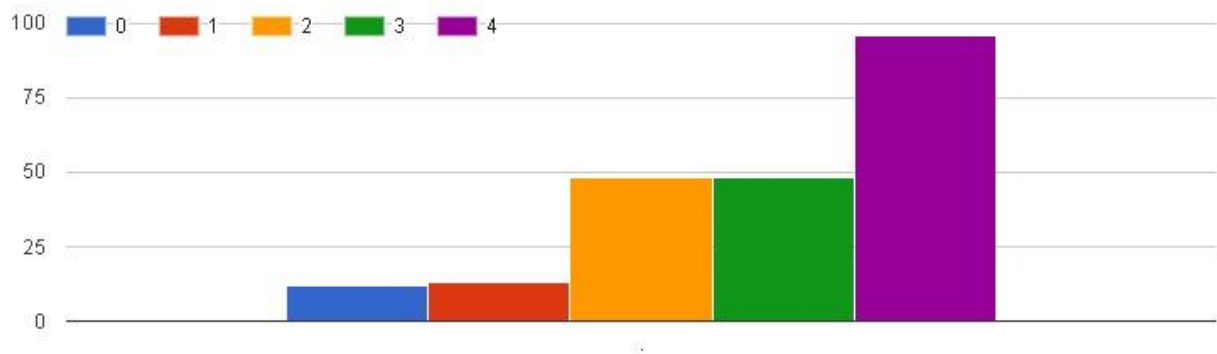
4 - Regularly

3 - Often

2 - Sometimes

1 - Rarely

0 - Never





9.The teaching and mentoring process in your institution facilitates you in cognitive, social and emotional growth.

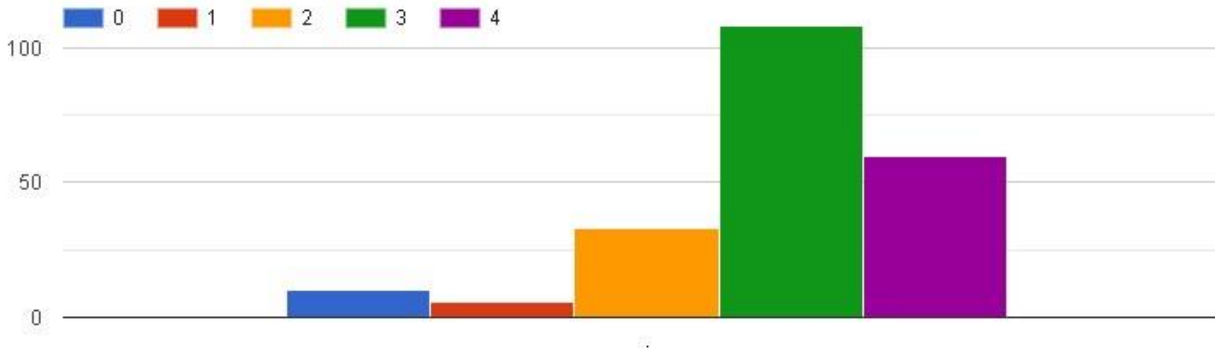
4 - Significantly

3 - Very well

2 - Moderately

1 - Marginally

0- Not at all



10. The institution provides multiple opportunities to learn and grow.

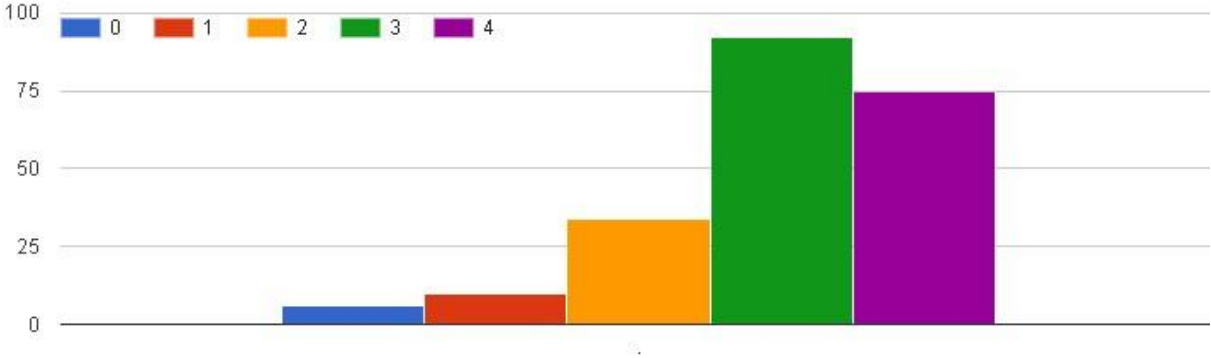
4 – Strongly agree

3 – Agree

2 – Neutral

1 – Disagree

0- Strongly disagree



11. Teachers inform you about your expected competencies, course outcomes and programme outcomes.

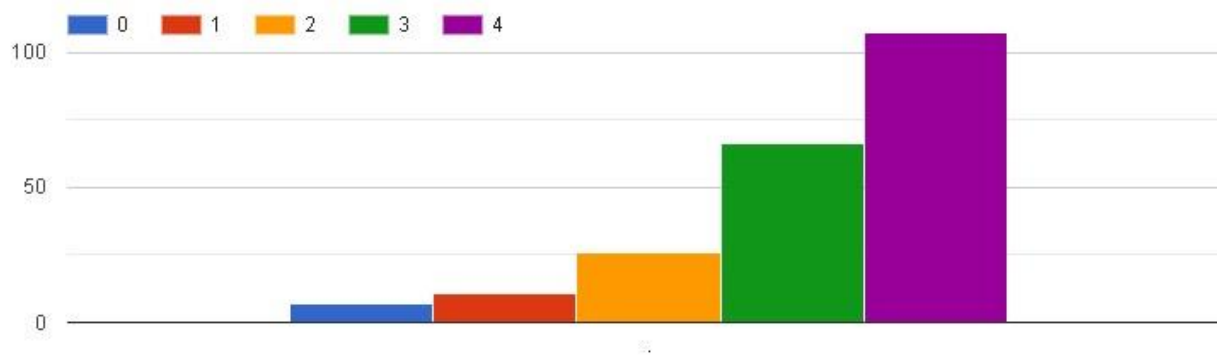
4 - Every time

3 - Usually

2 - Occasionally/Sometimes

1 - Rarely

0 - Never



12. Your mentor does a necessary follow-up with an assigned task to you.

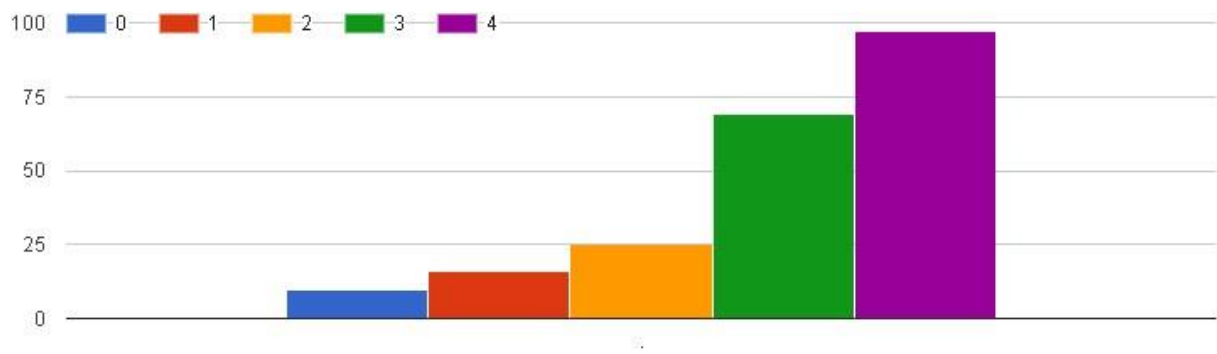
4 - Every time

3 - Usually

2 - Occasionally/Sometimes

1 - Rarely

0 - I don't have a mentor



13. The teachers illustrate the concepts through examples and applications.

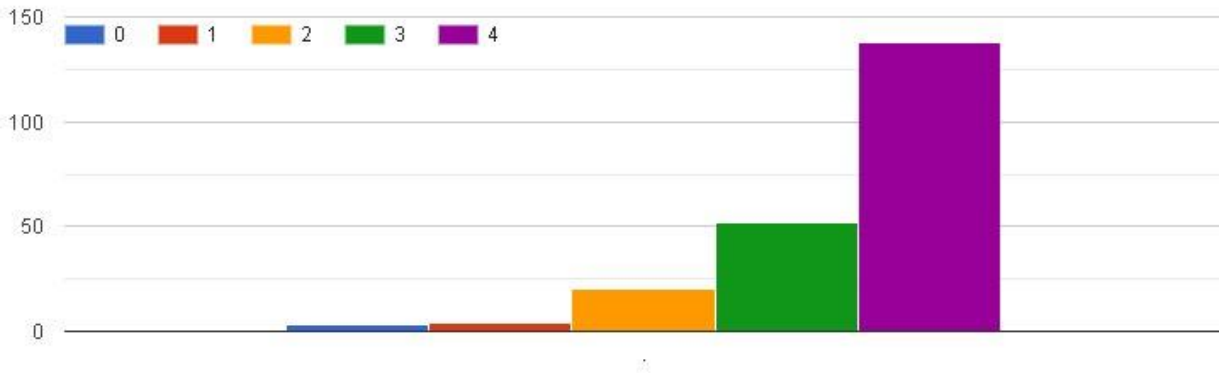
4 - Every time

3 - Usually

2 - Occasionally/Sometimes

1 - Rarely

0 - Never



14. The teachers identify your strengths and encourage you with providing right level of challenges.

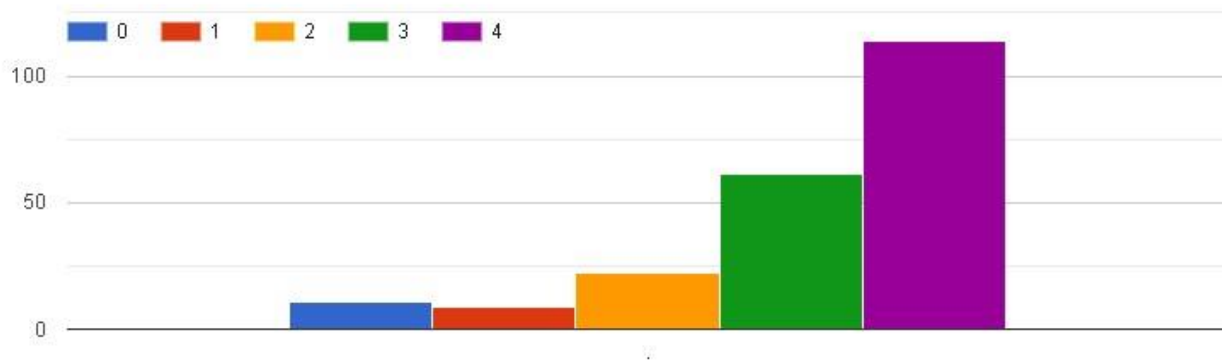
4 - Fully

3 - Reasonably

2 - Partially

1 - Slightly

0 - Unable to



15. Teachers are able to identify your weaknesses and help you to overcome them.

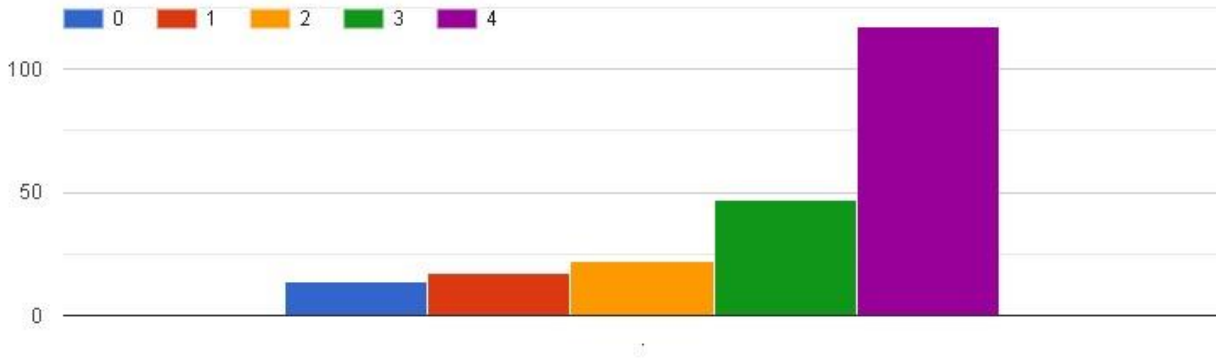
4 - Every time

3 - Usually

2 - Occasionally/Sometimes

1 - Rarely

0 - Never



16. The institution makes effort to engage students in the monitoring, review and continuous quality improvement of the teaching learning process.

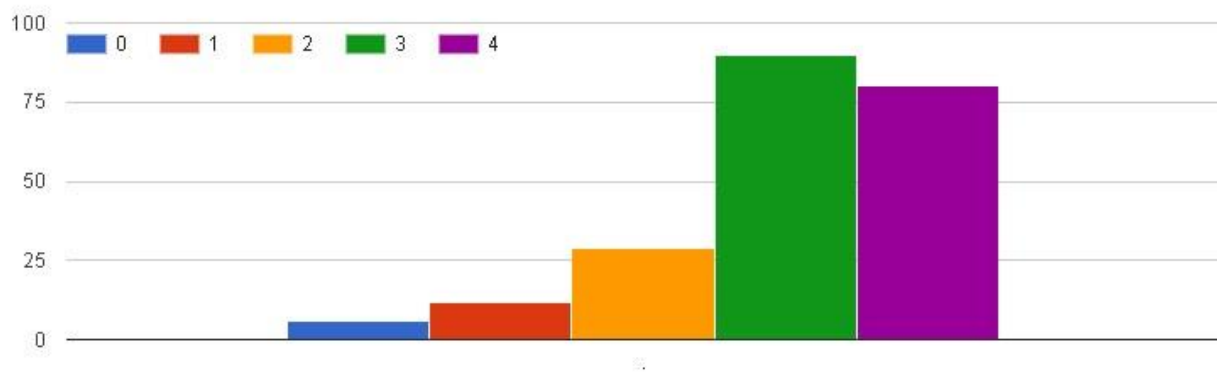
4 - Strongly agree

3 - Agree

2 - Neutral

1 - Disagree

0 - Strongly disagree





17. The institute/ teachers use student centric methods, such as experiential learning, participative learning and problem solving methodologies for enhancing learning experiences.

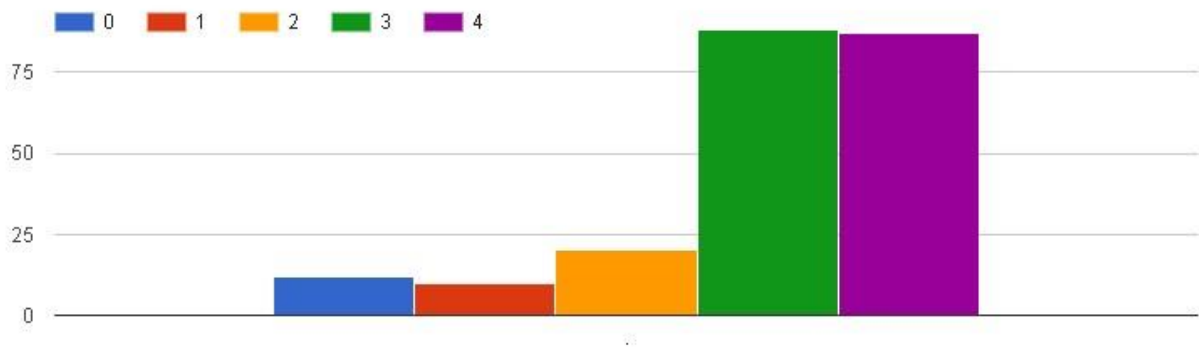
4 – To a great extent

3 – Moderate

2 – Some what

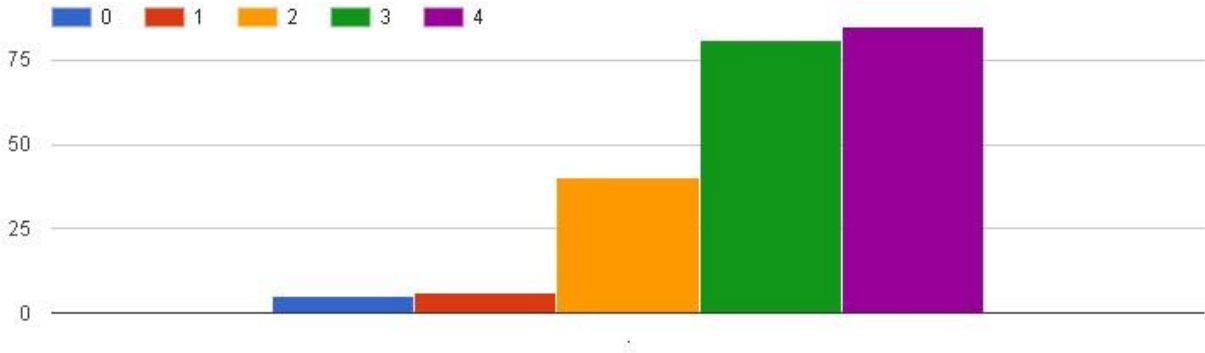
1 – Very little

0 – Not at all



18. Teachers encourage you to participate in extracurricular activities.

- 4 - Strongly agree
- 3 - Agree
- 2 - Neutral
- 1 - Disagree
- 0 - Strongly disagree



19. Efforts are made by the institute/ teachers to inculcate soft skills, life skills and employability skills to make you ready for the world of work.

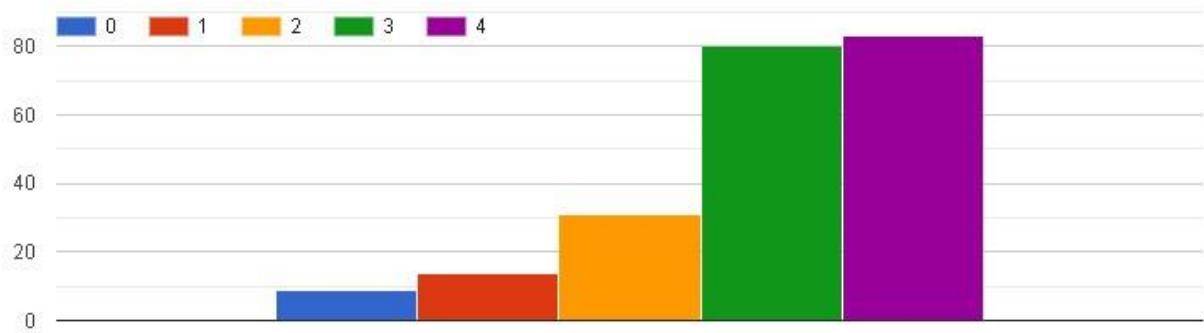
4 - To a great extent

3 - Moderate

2 - Some what

1 - Very little

0 - Not at all



20. What percentage of teachers use ICT tools such as LCD projector, Multimedia, etc. while teaching.

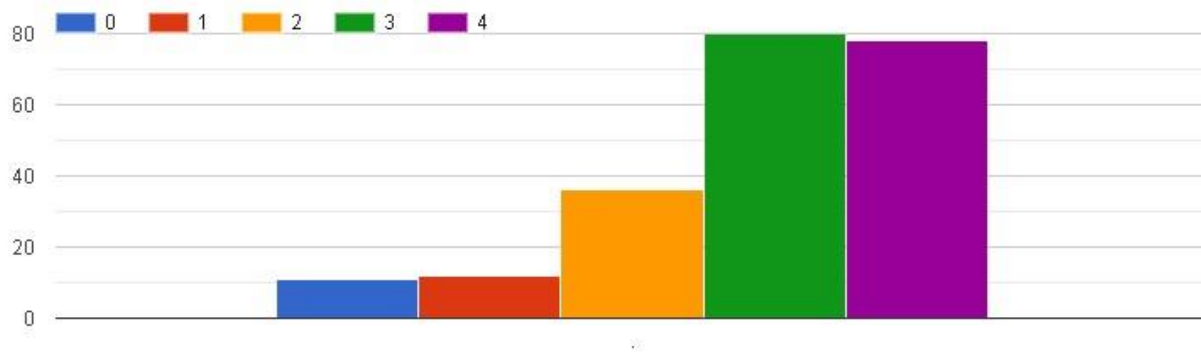
4 - Above 90%

3 - 70 - 89%

2 - 50 - 69%

1 - 30 - 49%

0 - Below 29%



21. The overall quality of teaching-learning process in your institute is very good.

4 - Strongly agree

3 - Agree

2 - Neutral

1 - Disagree

0 - Strongly disagree

