

# Student Satisfaction Survey (SSS) 2022-23

## Government Degree College Bijbehara.

### Teaching – Learning and Evaluation

Following are questions for online student satisfaction survey regarding teaching learning process.

1. How much of the syllabus was covered in the class?

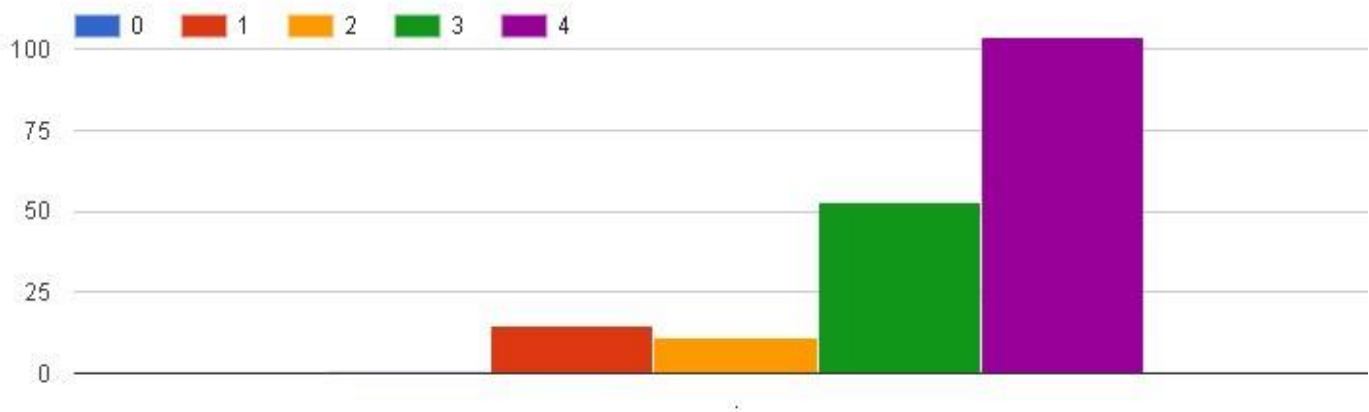
4 – 85 to 100%

3 – 70 to 84%

2 – 55 to 69%

1 – 30 to 54%

0 – Below 30%



2. How well did the teachers prepare for the classes?

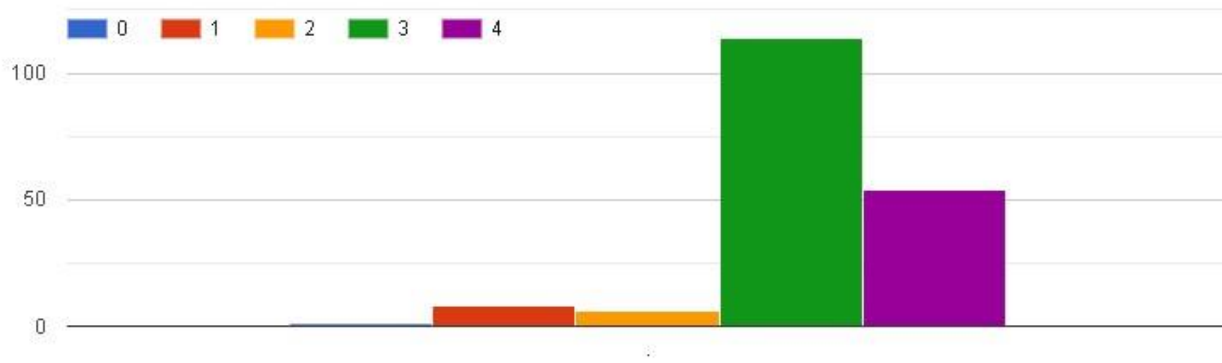
4 - Thoroughly

3 - Satisfactorily

2 - Poorly

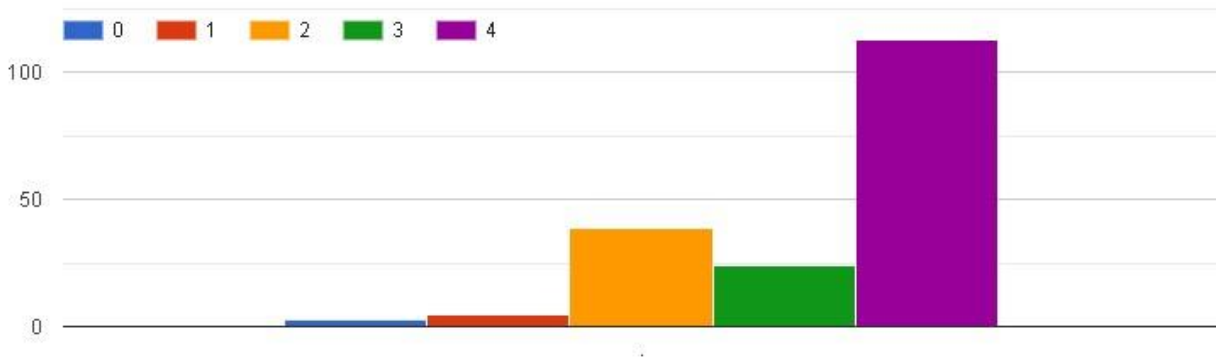
1 - Indifferently

0 - Won't teach at all



3. How well were the teachers able to communicate?

- 4 – Always effective
- 3 – Sometimes effective
- 2 – Just satisfactorily
- 1- Generally ineffective
- 0- Very poor communication



4. The teacher's approach to teaching can best be described as

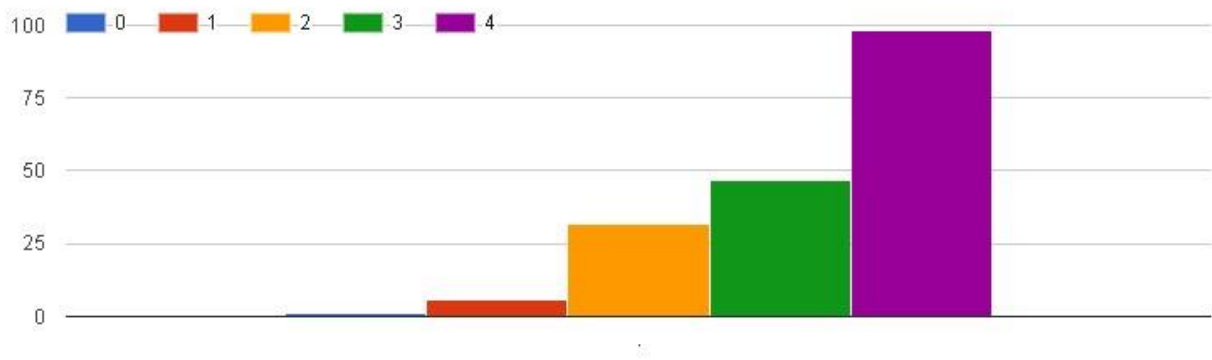
4- Excellent

3 - Very good

2 - Good

1 - Fair

0- Poor



5. The teacher's approach to teaching can best be described as

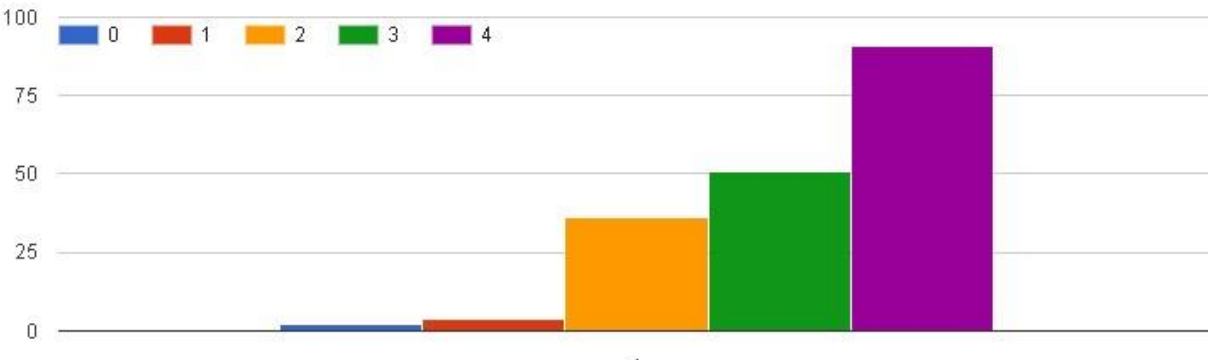
4- Excellent

3 - Very good

2 - Good

1 - Fair

0- Poor



6. Fairness of the internal evaluation process by the teachers.

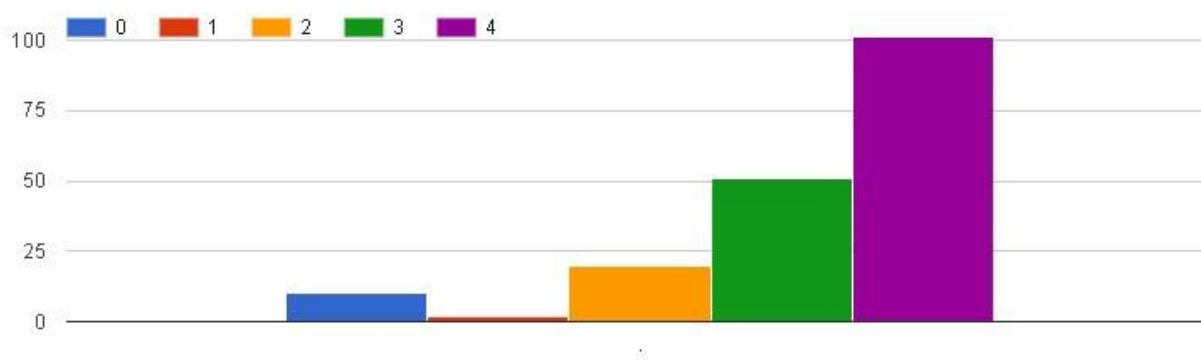
4 – Always fair

3 – Usually fair

2 – Sometimes unfair

1 – Usually unfair

0 – Unfair



7. Was your performance in assignments discussed with you?

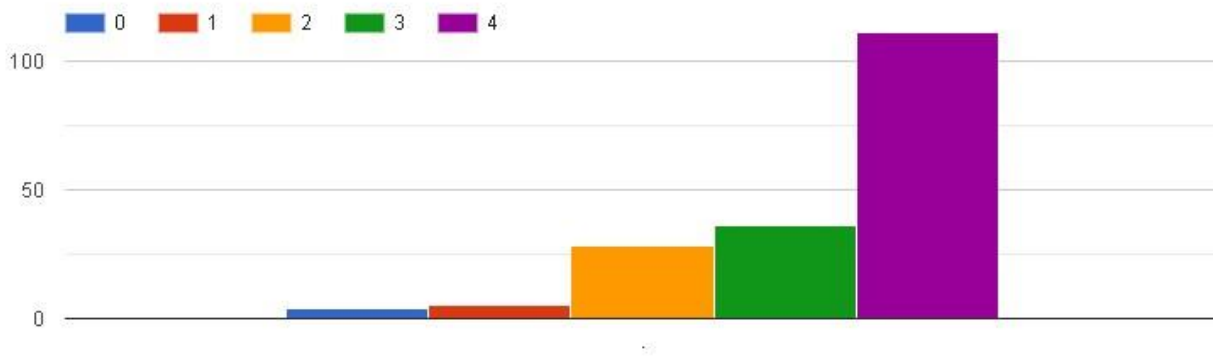
4 - Every time

3 - Usually

2 - Occasionally/Sometimes

1 - Rarely

0 - Never



8. The institute takes active interest in promoting internship, student exchange, field visit opportunities for students.

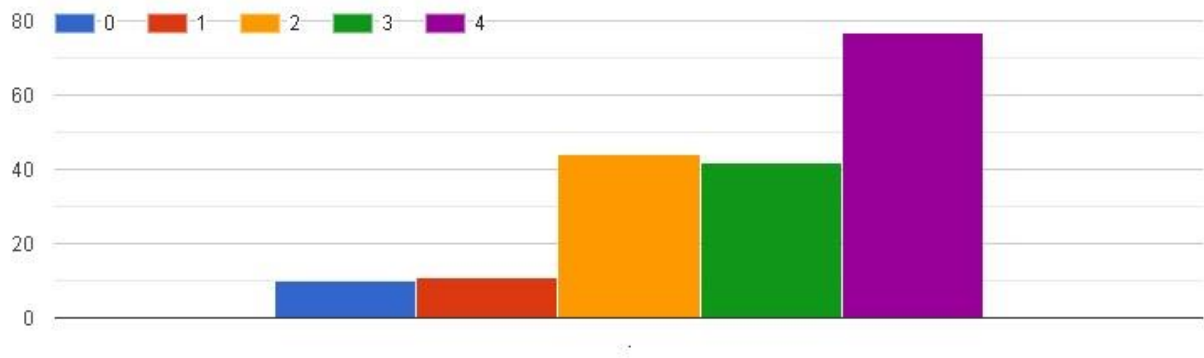
4 - Regularly

3 - Often

2 - Sometimes

1 - Rarely

0 - Never





9. The teaching and mentoring process in your institution facilitates you in cognitive, social and emotional growth.

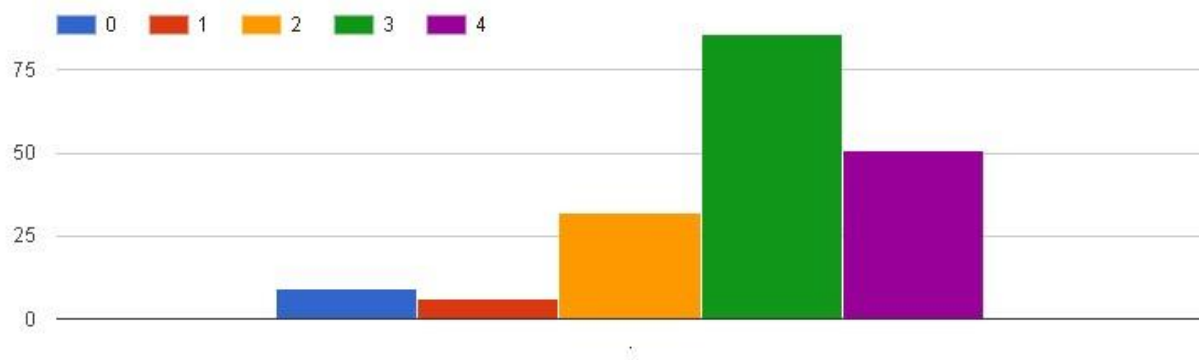
4 - Significantly

3 - Very well

2 - Moderately

1 - Marginally

0 - Not at all



10. The institution provides multiple opportunities to learn and grow.

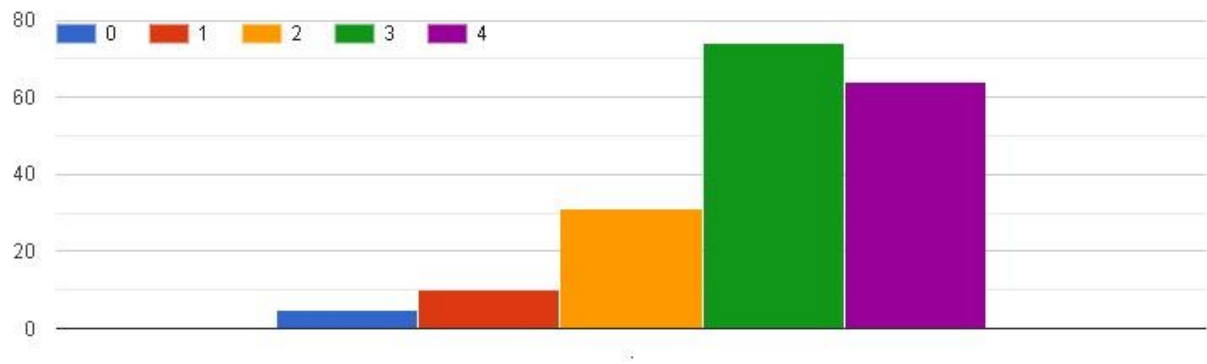
4 - Strongly agree

3 - Agree

2 - Neutral

1 - Disagree

0- Strongly disagree



11. Teachers inform you about your expected competencies, course outcomes and programme outcomes.

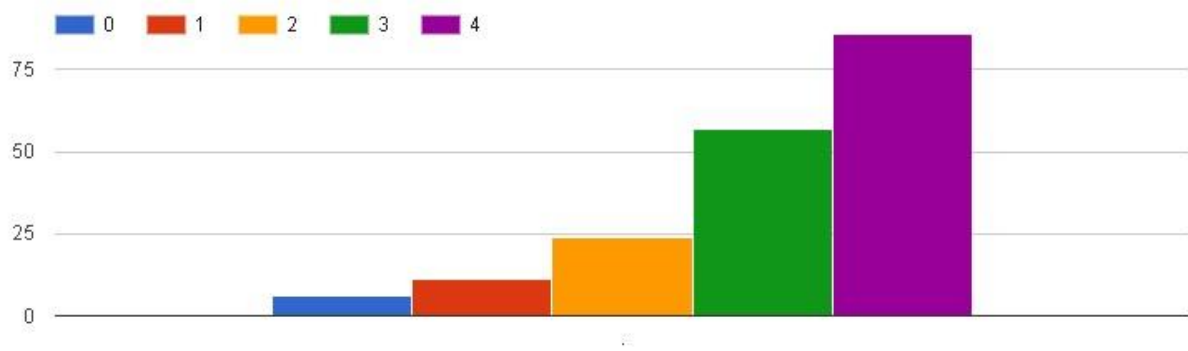
4 – Every time

3 – Usually

2 – Occasionally/Sometimes

1 – Rarely

0 – Never



12. Your mentor does a necessary follow-up with an assigned task to you.

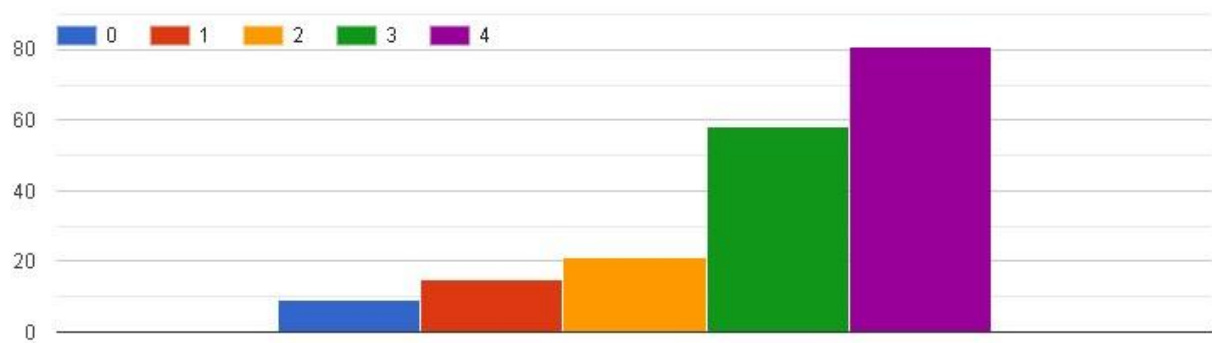
4 – Every time

3 – Usually

2 – Occasionally/Sometimes

1 – Rarely

0 – I don't have a mentor



13. The teachers illustrate the concepts through examples and applications.

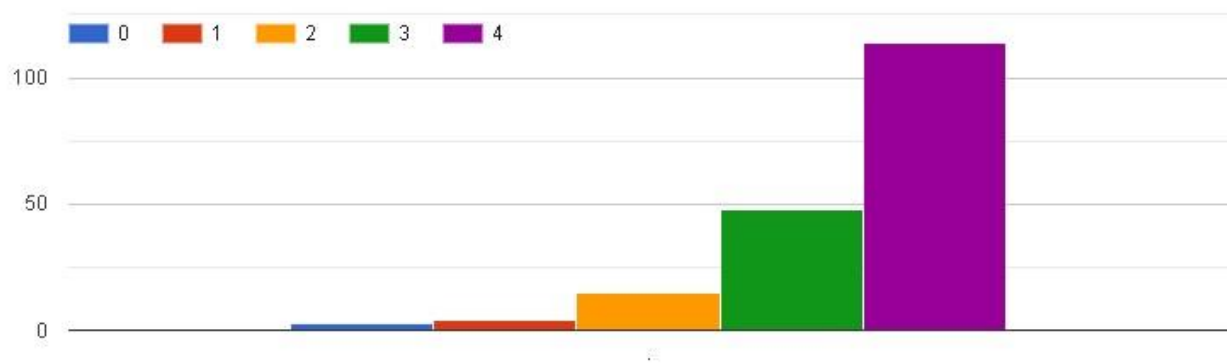
4 - Every time

3 - Usually

2 - Occasionally/Sometimes

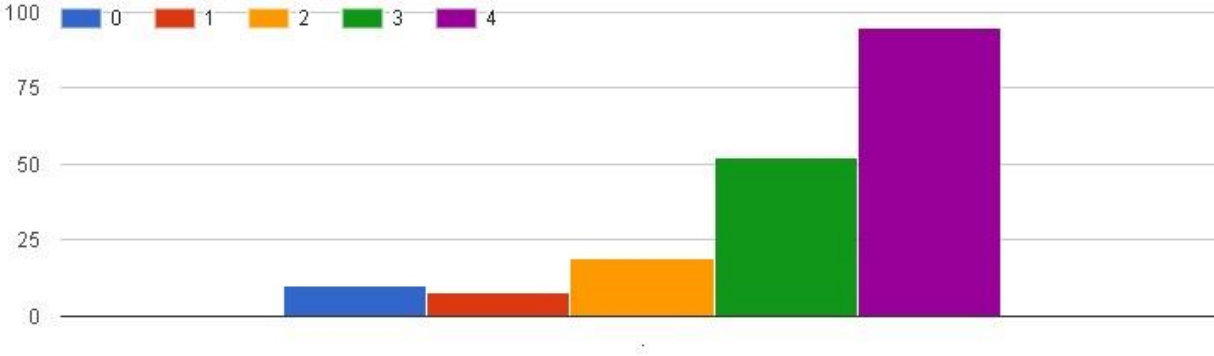
1 - Rarely

0 - Never



14. The teachers identify your strengths and encourage you with providing right level of challenges.

- 4 - Fully
- 3 - Reasonably
- 2 - Partially
- 1 - Slightly
- 0 - Unable to



15. Teachers are able to identify your weaknesses and help you to overcome them.

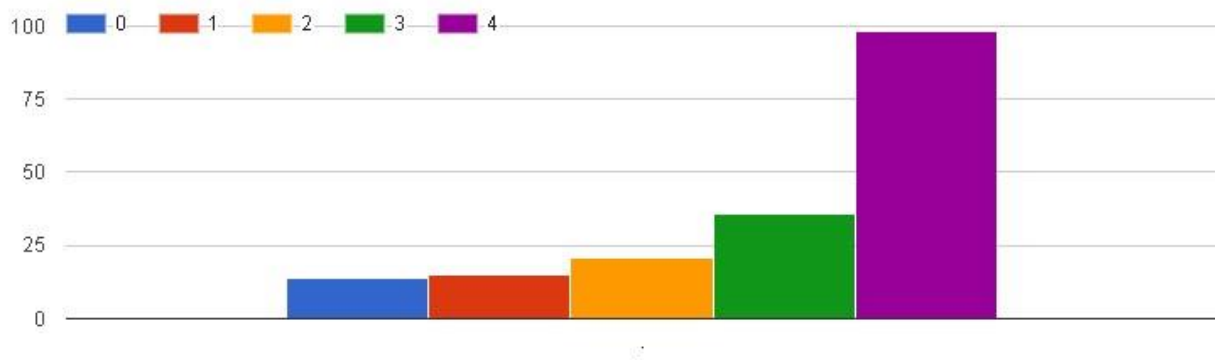
4 - Every time

3 - Usually

2 - Occasionally/Sometimes

1 - Rarely

0 - Never



16. The institution makes effort to engage students in the monitoring, review and continuous quality improvement of the teaching learning process.

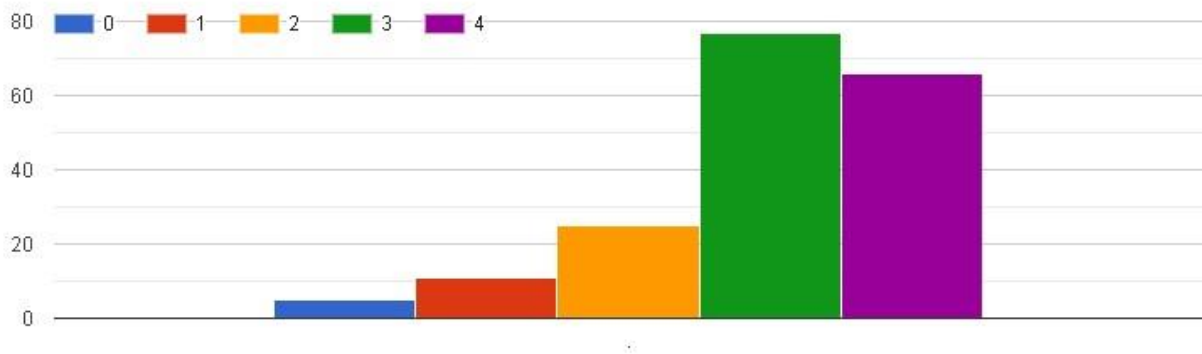
4 – Strongly agree

3 – Agree

2 – Neutral

1 – Disagree

0 – Strongly disagree





17. The institute/ teachers use student centric methods, such as experiential learning, participative learning and problem solving methodologies for enhancing learning experiences.

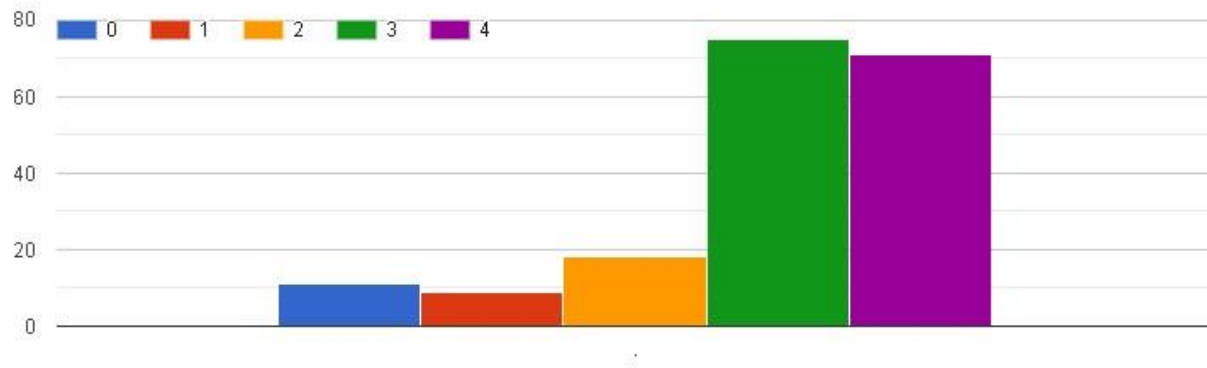
4 – To a great extent

3 – Moderate

2 – Some what

1 – Very little

0 – Not at all



18. Teachers encourage you to participate in extracurricular activities.

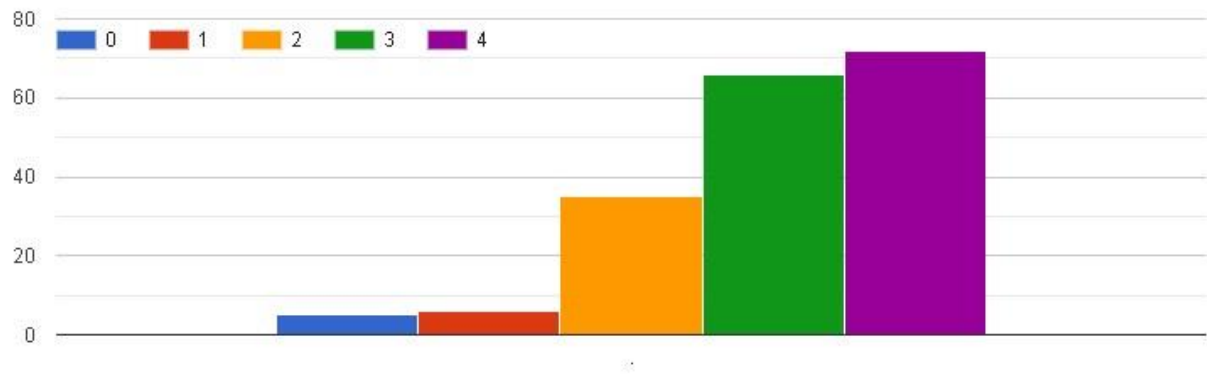
4 - Strongly agree

3 - Agree

2 - Neutral

1 - Disagree

0 - Strongly disagree



19. Efforts are made by the institute/ teachers to inculcate soft skills, life skills and employability skills to make you ready for the world of work.

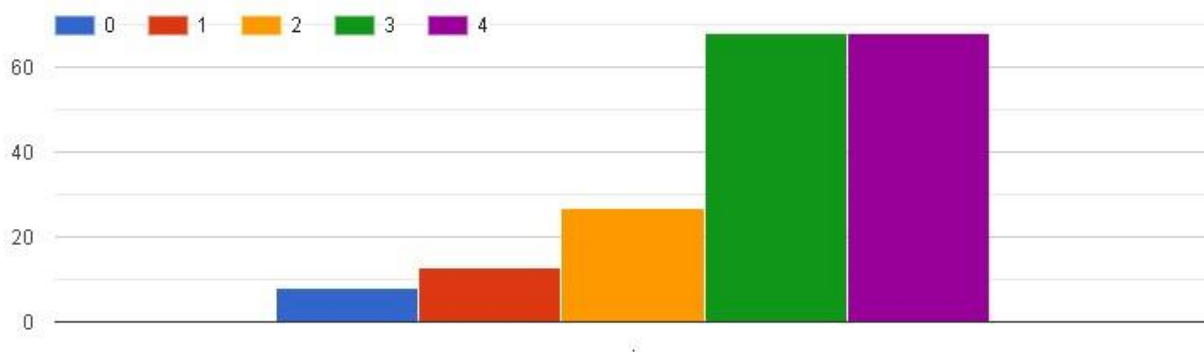
4 – To a great extent

3 – Moderate

2 – Some what

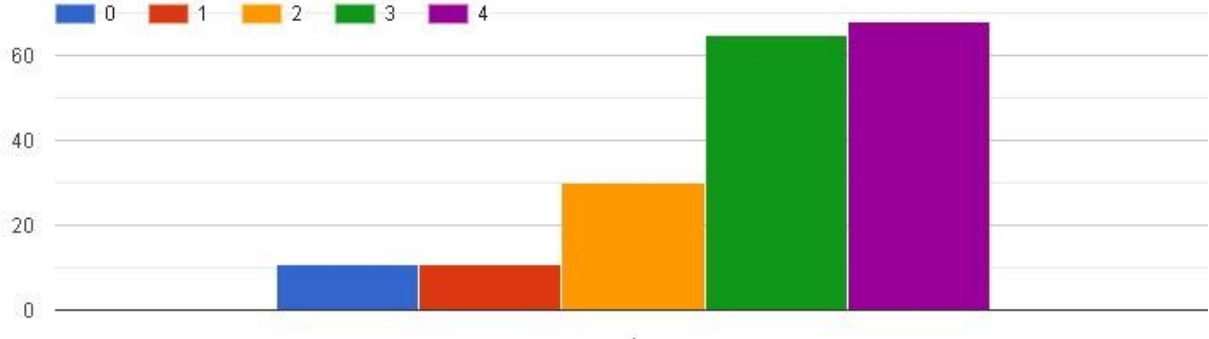
1 – Very little

0 – Not at all



20. What percentage of teachers use ICT tools such as LCD projector, Multimedia, etc. while teaching.

- 4 - Above 90%
- 3 - 70 - 89%
- 2 - 50 - 69%
- 1 - 30 - 49%
- 0 - Below 29%



21. The overall quality of teaching-learning process in your institute is very good.

4 - Strongly agree

3 - Agree

2 - Neutral

1 - Disagree

0 - Strongly disagree

